

DUTCH | DESIGN | HOTEL | ARTEMIS  
PRESENTS d.&a EXPO

**BIG BOLD  
BOTANICS**

**24.2**

**8.06 - 29.09.2024**

**d.&a**<sup>nl</sup>  
**Artemis**  
\*\*\*\* Amsterdam

HOMAY  
RAPHIA  
LALU BAGS  
INGRID SLAA  
ANNEKE BRUIN  
RICH HERITAGE  
STUDIO MIRTE  
JOS BRÖLMANN  
SUZANNE ALLEWELT  
MEET YOUR GREENS  
THIJN WESTERMANN



# DUTCH DESIGN CONCEPT

The adventurousness, quirkiness and thoughtfulness of Dutch Design is reflected in the total experience of everything we do. d.&a (Design & ARTeMIS) is the d.&a of our hotel! From your plate to your pillow, up to the meeting package, you can find 'the Art of Dutch Design'.

Dutch Design Hotel Artemis breathes and oozes 'Dutch Design'. From every geometric corner of our hotel you experience the influence and quirkiness of Dutch architects, designers and artists. It is the location where hospitality and Dutch Design meet and reinforce each other.



# THE PLACE WHERE HOSPITALITY MEETS DUTCH DESIGN



# d.&a PLATFORM

d.&a EXPO  
d.&a CONNECTED  
d.&a LEARNING  
d.&a SHOPPING  
d.&a LIVE

Dutch Design Hotel Artemis has set up the **d.&a Platform** where various worlds and groups meet, connect and inspire each other. Collaboration and learning from each other is the strength; **d.&a Connected** and **d.&a Learning**. The d.&a expos are thematic exhibitions that take place every four months alternate. It shows work by renowned Dutch artists and designers, as well as promising new talent; **d.&a Expo**. Works of all exhibitors are for sale through Dutch Design Hotel Artemis; **d.&a Shopping** and **d.&a Live!** We want to bring the guest into contact with the creative process. Artists and designers can show their expertise through LIVE events or workshops.



HOMAY

LALU BAGS

JOS BRÖLMMANN

ANNEKE BRUIN

SUZANNE ALLEWELT

THIJN WESTERMANN

MEET YOUR GREENS

RICH HERITAGE

STUDIO MIRTE

INGRID SLAA

RAPHIA

# BIG BOLD BOTANICS

## 8.06 - 29.09.2024

### d.&a EXPO

Enter the lush world of Big Bold Botanics, where the essence of life unfolds amid colorful floral displays. This exhibition offers an in-depth exploration of the relationship between humans and nature, celebrating the beauty and enchantment of flowers and plants.

From ancient civilizations to modern times, artists and designers have been inspired by the world of flowers and plants. Learn about the renewed attention to biodiversity and the importance of working with, rather than against, nature.

Marvel at the subtleties of the natural world as you observe the flowers as vibrant pearls that embody the opulence of nature. The term 'botany', derived from the Greek word for meadow and grass, reveals a profound relationship between human interest in both plants and flowers, and the food chain that fuels our existence. Did you know that there are 12,000 species of grasses? Of which the most important are corn, rice and grain and which provide fifty percent of our calories?

Can we improve biodiversity ourselves by using many and especially different plants instead of always the same ones on our beds, balconies or gardens? More and more artists and designers are focusing on nature: they ask critical questions about the way nature is controlled and exploited. They call for a radically different approach to our relationship with nature.

This d.&a Big Bold Botanics exhibition invites reflection on our relationship with nature and calls for a different view of our interaction with the greenery around us.



HOMAY	8
RAPHIA	10
LALU PRODUCTS	12
INGRID SLAA	14
ANNEKE BRUIN	16
RICH HERITAGE	18
STUDIO MIRTE	20
JOS BRÖLMANN	22
SUZANNE ALLEWELT	24
MEET YOUR GREENS	26
THIJN WESTERMANN	28

# HOMAY

WOOD SCULPTURES/HOMAY.NL



In a world where nothing is static, I explore the dynamics of movement and change with my rotating sculptures. My 'Flower Jewels' highlight the subtle movements and forms that emerge from the natural world, each piece becoming a vibrant expression of ongoing transformation. I invite viewers to actively engage and continually discover new perspectives within their evolving character.

These works also serve as a sustainable interpretation of flowers in a vase, intended to be cherished by families for generations. They emphasize not only the unique beauty of nature but also the importance of sustainability in design.



## SPROUT 1A

Material:  
oak wood, bamboo, brass  
40x18x75 cm



## SPROUT 1B

Material:  
oak wood, bamboo, brass  
40x18x75 cm



*JOIN MY WHIRL OF ROTATION*

# RAPHIA

SHOE DESIGNER/RAPHIA.NL



# raphia

Raphia is an artisanal shoe label with a focus on natural products, ancient craft and modern design. Founded in 2015 by Utrecht based Dutch-Moroccan designer Said Belhadj, the brand offers handcrafted raffia shoes made in collaboration with Moroccan artisans and European organic supplier companies. Inspired by traditional techniques developed by local craftspeople, Raphia develops new shapes using raffia, a material made from dried palm leaves of the raphia taedigera tree. Dyed with natural pigments resulting in unique colours and patterns, the raffia is stitched by hand on the shoe last. The fibre is surprisingly strong and

highly breathable, retaining the artisan's touch and showing the beauty of handcraft. The soles are produced in France, made either with sustainable natural tanned leather or natural rubber using hevea milk. The insoles are a blend of coconut fiber and linen. All parts are put together in the Netherlands. Behind their light and fragile appearance, Raphia shoes are trusted lifelong partners, almost infinitely repairable. The result is exceptionally comfortable shoes that adapt quickly to the feet. It is a decidedly challenging product to develop, since comfort is not sacrificed for the sake of sustainability, nor does sustainability come at the cost of comfort.

## RAFFIA WOMEN SHOES HEVEA BLACK STRIPES HIGH

A handcrafted High raffia sneaker with a natural rubber sole. Outspoken black & natural patterns. The Raffia Upper is hand stitched Morocco. The outsole is made of 100% natural rubber and handcrafted in France. The insole is made from coconut fibre, kenaf & linen. The laces are made from Tencel. This shoe is very light and open, and is completely vegan. Colour: black & natural.



## RAFFIA WOMEN SHOES HEVEA NATURAL FIBER

A handcrafted raffia laced-up shoe with a natural rubber sole. The dried raffia leaves are hand-woven around the shoe last in Morocco using different techniques resulting in unique patterns. The sole is made of 100% natural rubber and handcrafted in France. This shoe is very light and open, and is completely vegan. Colour: natural.



# LALU PRODUCTS

CO-FOUNDERS OF CRAFTSMANSHIP AND DURABLE PRODUCTS  
LALUPRODUCTS.COM



LaLu stands for radical equality: a fair compensation for everyone involved in creating a product. Animals and the earth also have the right to be protected during this process. Organic and plant-based products inspire all our creations. Let's challenge the status quo of rapid consumption together and choose fair products with a story behind them.

Our materials (hemp, nettle and cotton) grow abundantly in the wild of Nepal and India, without pesticides and synthetic fertilizers. This allows for easy recycling and biodegradation of our fabrics while reducing the environmental impact of making a LaLu bag. The earth gives us all we need!

***YOUR CONSCIOUS  
LIFESTYLE  
DESERVES A BAG TO  
MATCH IT.***

***BOLD, HONEST &  
UNCOMPROMISING.***

**RAVI CROSS BODY BAG**  
Material:  
nettle and cotton  
16x20 cm



**ALOK FANNY PACK**  
Material:  
hemp and nettle  
14x24 cm



# INGRID SLAA

VISUAL ARTIST/SPATIAL ART/INGRIDSLAA.NL



Through casts of my body, or parts of it, I tell stories. Stories that are about brokenness, about being locked up, trapped, damaged, distressed and in pain. But also about self-awareness and strength. About getting up again and moving on. My works evoke all kinds of emotions, including anger, fear, abandonment, but also resistance, comfort and pride. And that is what it is all about for me: transforming thoughts, feelings and emotions into spatial work and using them to touch others, make them think, comfort or move them.

**CONFINED GROWTH  
NEEDS SPACE, AND  
BOLDNESS. CROSSING  
BORDERS.**

*HAIKU ABOUT MY WORK BY  
KATRIEN RUITENBURG*

## WATERLAND

Material:

epoxy, fiberglass and concrete plywood  
Depth 2 meter and height 1 meter





# ANNEKE BRUIN

JEWELRY DESIGNER/GOLDSMITHS AND CERAMICS/ANNEKEBRUIN.NL

*anneke bruin*  
sieraden & keramiek ✱



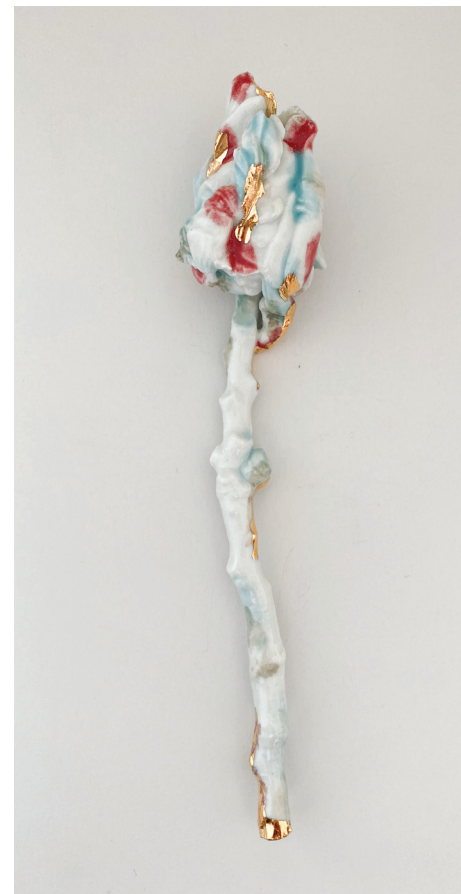
In the work of Anneke Bruin, stillness, growth, and beauty are pivotal themes. Inspired by nature, meaningful shapes, symbols, and cultural traditions, her work is imbued with a deep and meaningful dimension.

For the exhibition 'Big Bold Botanicals', I drew inspiration from the lavish parrot tulip. It's a beautiful example of bold botanical beauty.

**THE DAZZLING, LUSH BUD OF THE PARROT TULIP SERVED AS INSPIRATION FOR A SERIES OF WALL DECORATIONS OR FLORAL WALL PIECES**

## PARROT TULIP

Material:  
porcelain with colored glaze and gold luster  
20,5x5 cm



## PARROT TULIP GOLD

Material:  
porcelain with gold luster top  
19x5 cm



# STUDIO MIRTE

TEXTILE DESIGNER/STUDIOMIRTE.COM



to add something extra to the home. With my works I emphasise the physical experience of a space. Additionally, my works are functional due to the acoustic function they have.

My work is created by hand in my garden atelier in Utrecht. I use a technique called tufting, in which I use a handheld machine called a tufting gun, to insert thread through a primary backing fabric. Every piece is meticulously trimmed by hand, clipping every strand of yarn into the right shape. This craft enhances the handmade feel of every piece.

With a clear emphasis on abstract shapes and graphics, I create works that are both contemporary and playful. Because of my background in graphic design, my visual language is bold, characterised by clean lines and abstract shapes. By using these visuals in combination with textiles, a visual tension arises between the precision of the design and the natural imperfection of the medium, which gives an extra layer of character to my work. By using a tactile medium, I aim

**SOFT, FLUFFY  
OBJECTS FOR  
YOUR HOME.**

A custom work of 90x120 cm  
handtufted 100% wool



A custom work installation, tufted  
in varying cut pile heights in 100%  
wool. Rug size 170 x 250 cm, wall  
pieces 120 x 50 cm and 160 x 170 cm.



# JOS BRÖLMANN

VISUAL ARTIST/PAINTINGS/DESIGNER OF ART TOYS/JOSBROLMANN.COM



**MY WORK SHOWS THAT  
FLOWER STILL LIVES FROM  
200 YEARS AGO ARE A  
TREMENDOUSLY COLORFUL  
SOURCE OF INSPIRATION**

## EUPHORIC BLOOMS

Material:

acrylic on linen

80-60 cm



There's a fascinating story behind flower paintings by Amsterdam artist Jos Brölmann. All his colorful flower pieces are inspired by the famous Dutch master painter Georgius van Os, who happens to be Brölmann's ancestor from two centuries ago. The journey began when Brölmann encountered Van Os's painting "Allegory of Spring" at The Rijksmuseum. He consulted with the museum and decided

to create his first still life, drawing inspiration from Van Os's work. Since then, Brölmann has created new flower still lifes nearly every year, each one a tribute to Georgius van Os. Through his work, Brölmann not only revives Van Os's paintings but also showcases how different periods bring fresh interpretations and unique styles to classic art.

# SUZANNE ALLEWELT

DESIGNER / ARTIST / GRAPHIC DESIGN & ILLUSTRATION  
SUZANNEALLEWELT.COM



*"I AM SEEKING. I AM STRIVING. I AM IN IT WITH ALL MY HEART."*

*VINCENT VAN GOGH*

Suzanne studied Graphic Design at the Willem de Kooning Academy in Rotterdam. With a love for illustration with different techniques. After graduating, she started working at various advertising and design agencies as a designer and art director. She is currently a Freelance Allround Creative, and she makes a lot of her own signature work, which is available in several stores. She lives and works in Leiden.

Ever since I was little, I have loved nature and being outside. You can see that in my work. It is the source of inspiration for me. My work is a series of large bouquets. A bouquet is often short but powerful. I tried to capture this. My work is striking, powerful and that makes you want to look at it. By using sleek and organic shapes together in bright and clear colors, I create a tension between abstract and figurative art.

## TULPENBOEKET / TULIP BOUQUET

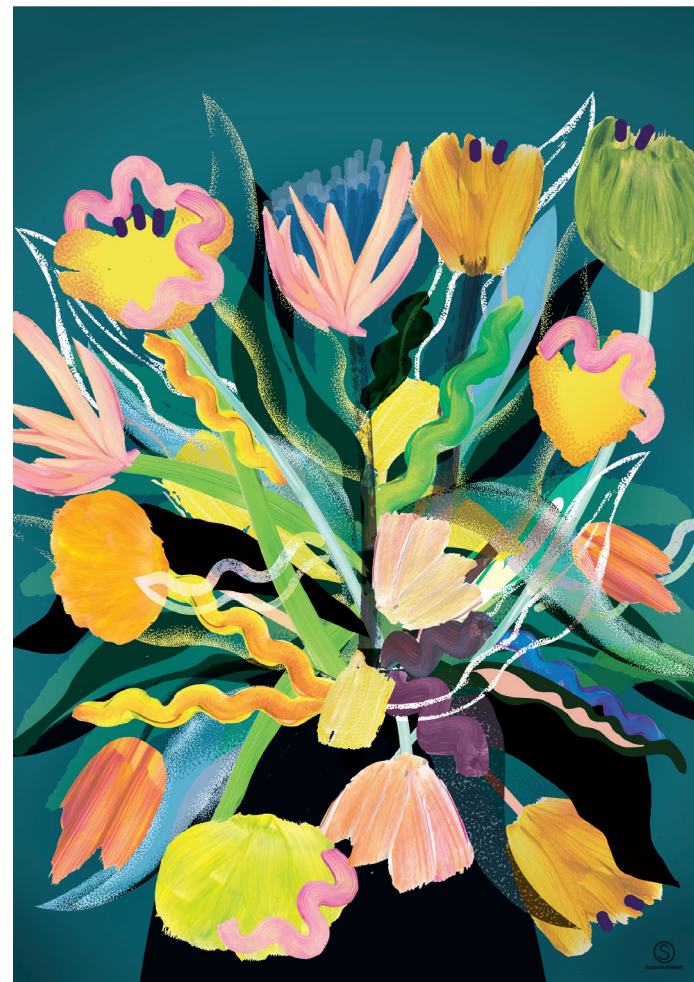
Material:

paint, pencils and laptop

Dibond print: 50x70,7cm

Poster: A3 / 42 x 29,7cm

A6 postcard: 10,5 x 14,8cm



# MEET YOUR GREENS

ARTISTS/GRAPHICS/STYLING/COOKING  
MEETYOURGREENS.NL



In our society we have become increasingly alienated from nature and the earth that feeds us. With our vegetable portraits we invite people to rediscover what a powerful source vegetables are. It is fulfilling to feel connected to the earth. This also makes you connected to yourself.

The vegetable portraits represent a sense of wonder. Wonder about the beauty of things around us and vegetables in particular. The portraits also represent connection: connection with the land and

the seasons, with nature. And connection with our loved ones because eating is such a beautiful form of being together.

Meet your Greens invites you to look with renewed wonder at the beauty, that is so close to us: the rich, wonderful beauty of vegetables. Through our vegetables we are connected to the seasons, the land, the soil, the earth, the bigger plan.

**WE LOOK THROUGH  
THE LENS UNTIL A  
CHARACTER APPEARS**

**THE DANCER**  
Material:  
munken lynx rough

Format:  
portrait format 48 x 68 cm

Paper:  
Your vegetable portrait is printed on eco-certified Munken Lynx Rough paper. Certificates: FSC, PEFC, EU Ecolabel



**JUMP FOR JOY**  
Material:  
munken lynx rough

Format:  
portrait format 48 x 68 cm

Paper:  
Your vegetable portrait is printed on eco-certified Munken Lynx Rough paper. Certificates: FSC, PEFC, EU Ecolabel



# RICH HERITAGE

HERBARIA /REINVENTED HERITAGE/ RICHHERITAGE.EU



Marian van Weert is a much sought-after speaker in Europe on the Dutch history of botany. She tells the story with great passion about 'Plant-Hunters' and 'Plant-Artists' from the distant past. From the plants they collected and preserved in a herbarium van Weert makes botanic art tableaux. Through these tableaux she shows that nature is complex and firm.

At a time when plant biodiversity is under pressure, I want to show how complex and robust the world of plants is through the work of Plant-Hunters and Plant-Artist in the past. With my work I bring botanical work from the past to bloom in the present.

***DRIED PLANTS THAT HAVE NOT YET DECAYED AFTER 450 YEARS AND HAVE ALSO SPREAD ACROSS EUROPE FROM PALESTINE AND SYRIA.***

BERTHE HOOLA (1817-1892)

Botanic Art Tableau

Message: The beautiful biodiversity of Indonesia

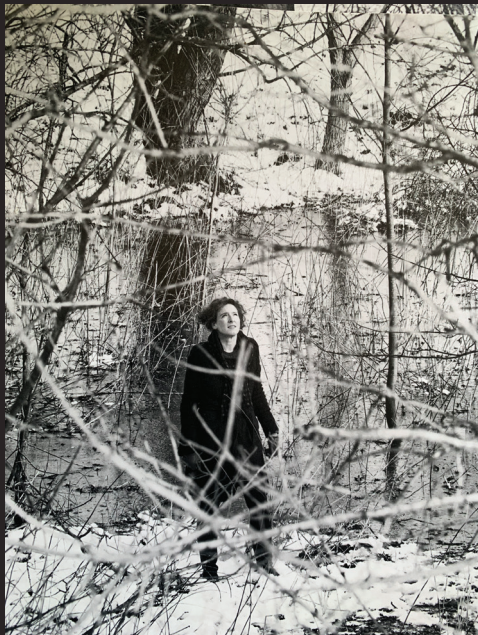
Material: Dibond

204x153 cm



# THIJN WESTERMANN

ARTIST, GARDENER, NATURE ACTIVIST/THIJNWESTERMANN.EXTO.NL



Inspiration comes from the different metals themselves, their colors, processing options and limitations. I instinctively tend towards an organic design and a non-standard perfect finish. The inspiration for designing my jewelry and small utensils comes from looking at historical design and craftsmanship. In addition, structures from nature are a great source of inspiration. Recycling is also an aspect of that love for nature; I reuse found parts of devices, objects and old jewelry as well as seeds, twigs, stones, shells.

*DEEP LOVE AND ADMIRATION FOR ART FORMS IN NATURE*

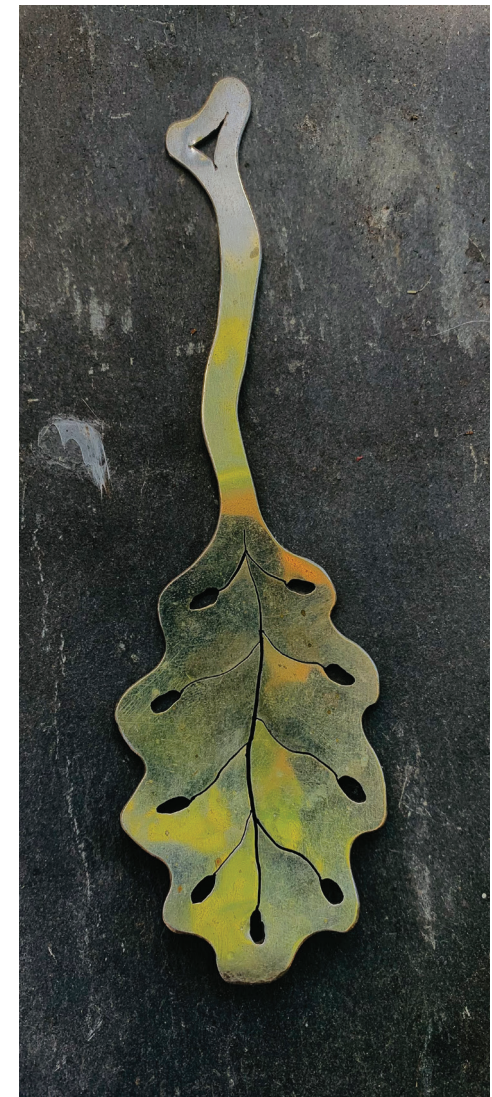
SILVER SPOON LEAF

Material:  
silver



SILVER SPOON LEAF

Material:  
silver



# COLOPHON



## CONTRIBUTED TO THIS EXHIBITION

### **Initiator**

DUTCH DESIGN HOTEL ARTEMIS

### **BD Manager**

Hannie Coenders

### **Concept coordinator d.&a platform**

Dewi van den Heuvel

### **Marketing & Communications**

Zan Princip

### **Graphic Design & Concept**

Nadezhda Noskova

 [DutchDesignHotelArtemis](#)

 [hotel\\_artemis](#)

[#ExpoBigBoldBotanics](#)

[#designandartemis](#)

[#d.&a\\_amsterdam](#)

[#hotel\\_artemis](#)





DUTCH DESIGN HOTEL ARTEMIS  
JOHN M. KEYNESPLEIN 2 | 1066 EP AMSTERDAM  
020 71 41 000 | DESIGNANDARTEMIS.COM